

Category 6 - UTP

SPECIFICATION

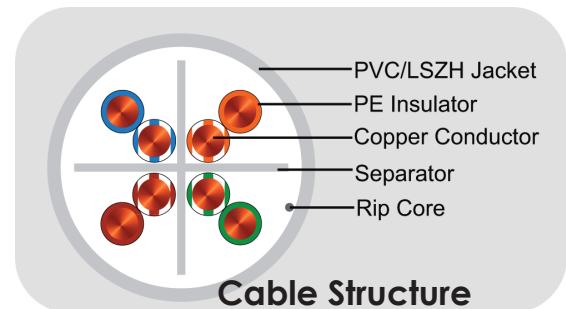
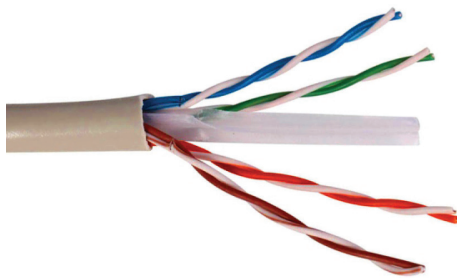
- 4 Pairs Unshielded Twisted Pair (UTP) Cable
- Conductor: Solid Bare Copper
- Sheath Color: Customizable
- Core Color:
 - Blue/Strip-Blue Orange/Strip-Orange
 - Green/Strip-Green Brown/Strip-Brown
- Conductor Diameter: 0.57mm (23 AWG)
- Insulation Material: HDPE
- Insulation Diameter: 1.00mm
- Jacket Material: PVC/LSZH
- PE Central Cross Separator
- Cable Diameter: 6.0mm Nominal
- Weight : Approx.42kg/km

PERFORMANCE

- Maximal operating frequency: 250Mhz
- Characteristic impedance: 100±15 ohms
- Nominal Velocity of Propagation: 69%
- P2Ground Capacity Unbalance: 330PF/100m(max.)
- Conductor DC Resistance at 20°C: < 73.2ohms/km
- Mutual Capacitance: < 5.6nF/100m
- Resistance Unbalance: 5% (max.)
- Delay Skew: < 45nS
- Minimum Bend Radius - Installed: 25mm
- During Installation (under Tension): 50mm
- Cold Bend(-20± 2°C x 4hrs): No Visible Crack
- Temperature Range: -20° to +70°C

COMPLIANCES

- ▶ ISO/IEC 11801
- ▶ IEC 61156-5
- ▶ EN 50173-1
- ▶ EN 50288-4-1
- ▶ ANSI/TIA-568-C.2
- ▶ YD/T 1019



LAN CABLE

TYPICAL CABLE PERFORMANCE

Frequency (MHz)	Attenuation (dB/100m)	Return Loss (dB)	NEXT (dB)	PSNEXT (dB)	ELFEXT (dB)	PSELFEXT (dB)	ACR (dB)	DELAY (ns/100m)
0.772	1.8	19.4	76.0	74.0	70.0	67.0	74.0	575.0
1.0	2.0	20.0	74.3	72.3	67.8	64.8	72.0	570.0
4.0	3.8	23.0	65.5	63.3	55.8	52.8	61.0	552.0
8.0	5.3	24.5	60.8	58.8	49.7	46.7	55.0	546.7
10.0	6.0	25.0	59.3	57.3	47.8	44.8	53.0	545.4
16.0	7.6	25.0	56.2	54.2	43.7	40.7	49.0	543.0
20.0	8.5	25.0	54.8	52.8	41.8	38.8	46.0	542.0
25.0	9.5	24.3	53.3	51.3	39.8	36.8	44.0	541.2
31.3	10.7	23.6	51.9	49.9	37.9	34.9	41.0	540.4
62.5	15.4	21.5	47.4	45.4	31.9	28.9	32.0	538.6
100.0	19.8	20.1	44.3	42.3	27.8	24.8	24.5	537.6
200.0	29.0	18.0	39.8	37.8	21.8	18.8	10.8	536.5
250.0	32.8	17.3	38.3	36.3	19.8	16.8	5.5	536.3

Ordering Information

Gray	Blue	White	Red	Green	Yellow	Orange
001-UTP-06-001	001-UTP-06-002	001-UTP-06-003	001-UTP-06-004	001-UTP-06-005	001-UTP-06-006	001-UTP-06-007
Black	Purple					
001-UTP-06-008	001-UTP-06-009					